

INSTALLATION

VALIRYO RECOMMENDATION FOR INSTALLATION IN THE SHOWER SPACE

Permitted place of use/operation

Valiryo can be installed inside the shower space because it has an IP56 Protection Index against the entry of water and dust. Valiryo has a higher IP rating than the one required to install electrical equipment in the wet areas of the shower. (See the chart below)

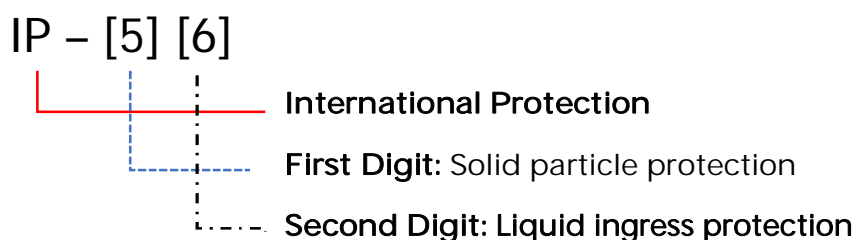


Figure 1: International Protection Code

	IP protection according to standards	Valiryo
Private places	IP X4	IP 56
Public places	IP X5	

Table 1: IP-Standards



IP 56 accredited by the international certificate: C / **18046512** carried out under the IEC 60529:1989 and IEC 60529:1989/A1:1999 standards, in the independent laboratory, with laboratory accreditation **ILAC N° 100/LE257**. These international standards correspond to the standards DIN EN 60529:2014-09 and VDE 0470-1:2014-09 available in Germany.

The CB certificate: BE-8415 was issued on the basis of the international standard (DIN EN 60529:2014-09). Accredited and issued by the independent laboratory "SGS Tecnos, S.A." with laboratory accreditation ILAC No.5/LE011. The standard DIN VDE 0100-701: 2008-10; VDE 0100-701: 2008-10 explains the requirements for low-voltage electrical installations in locations with baths or showers. This standard describes under point 701.512.2 the external circumstances that electrical equipment such as Valiryo must have at least an IPX5 protection class in order to be installed in zones 1 and 2 (shower area). If electrical equipment is also exposed to splashing water, the IPX5 protection class must also be complied with.

IP code digits explanation

- [5] Protection against harmful dust deposits:
- [6] Protection against heavy downpours:



Although it can be installed on any wall of your bathroom, we strongly recommend installing the Valiryo inside the shower area for a better experience, Valiryo is completely safe to use in wet environments by installing the unit according to the instruction described in this manual

Select the best place in your bathroom

In order to enjoy the best experience, we recommend installing the Valiryo inside the shower area. According to our user experience tests, the optimum place to install Valiryo will be the perpendicular wall to the faucet control. Placing Valiryo close to the faucet but facing perpendicular will make it easy to pre-heat Valiryo by switching on Valiryo 20-40 seconds before finishing your shower.

Pictures below are two samples to give you guidance on where we will install Valiryo. The examples are meant to help you to select the place to install Valiryo in your bathroom but are not meant to limit the place to install Valiryo. Feel free to install Valiryo where you think it will fit better your needs and your bathroom setup.

The Valiryo does not require any maintenance or the regular replacement of any of its parts. We simply recommend that you clean the surface using a cloth with water.

Examples: for the best place

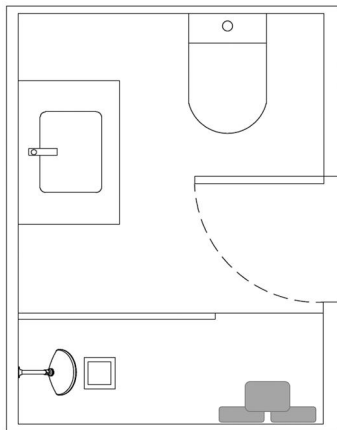


Figure 2: Bathroom layout 1

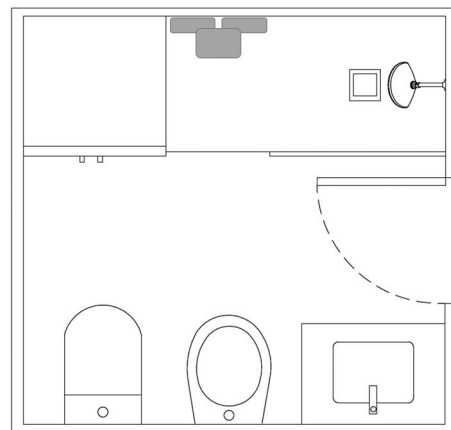


Figure 3: Bathroom layout 2

Legend:  Valiryo Body Dryer

Position inside the shower:

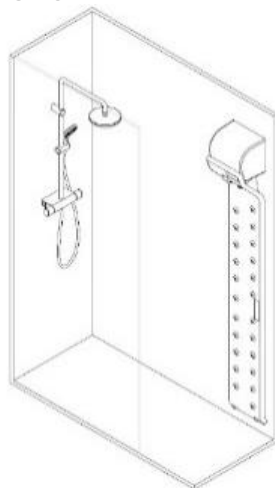


Figure 2: Best position

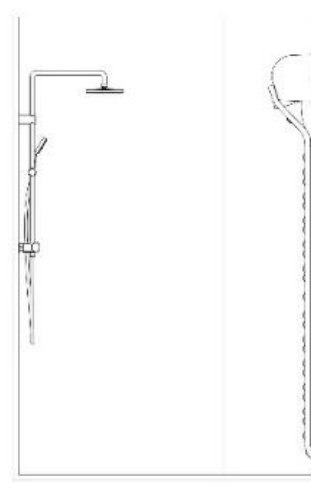
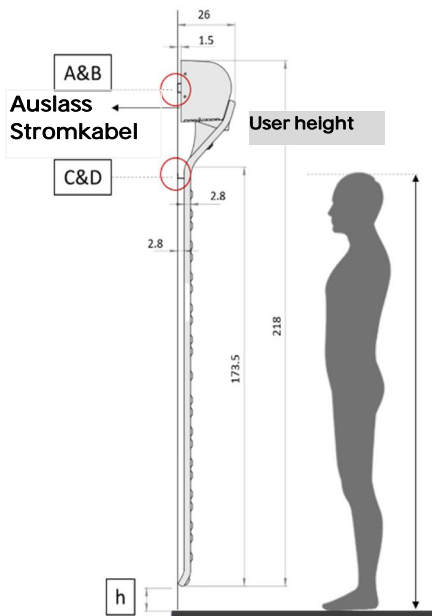


Figure 3: Alternative position

Select the height to place Valiryo

Please use the table below to calculate the height you want to place the Valiryo.

The table gives you reference of several user height. Select the height more convenient to the users and be aware of the ceiling height limitation in the last column.



All dimmesions are reference to the floor surface
All dimmesions are expressed in cm

User height	A&B	Electrical power cord	C&D	h	Minimum room height to install Valiryo
	Up-Case holes		Column / panel holes	Lower point of Valiryo t	
160 or lower	205	194.5	171.5	0.5	220
170	210.5	200	177	6	226
180	215.5	205	182	11	231
190	219.5	209	186	15	235
200 or higher	224.5	214	191	20	240

Valiryo total heigh = 218 cm

Table 2: Table to calculate optimum height

Figure 4: User high schematic

Measure the height of the room where Valiryo will be installed and make your calculations before drilling.

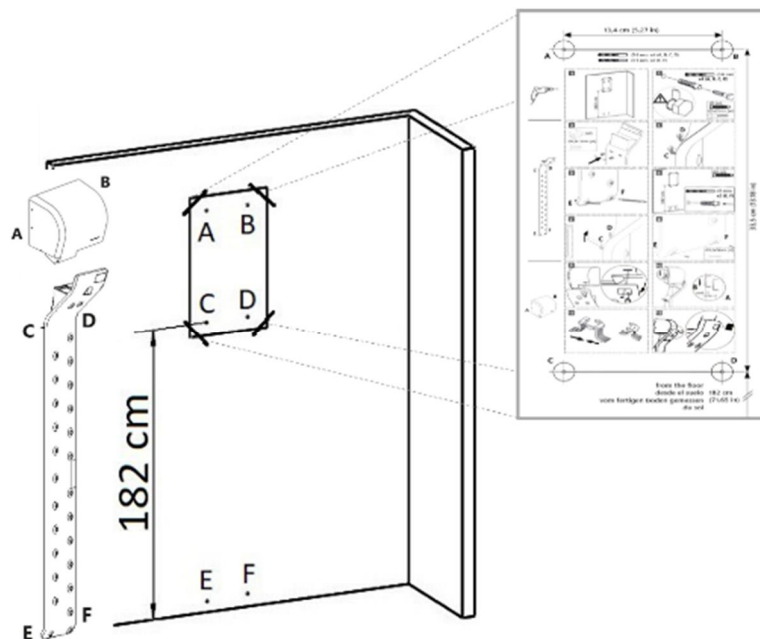


Figure 5: Example of an installation for a 180cm user, using the stencil included in the Valiryo panel box

Minimal Anforderungen



Höhe

Die Mindestraumhöhe, die für die Installation von Valiryo erforderlich ist, beträgt 220cm vom Boden bis zur Decke.

The recommended height is 2.30 meters, as it is recommended to have 10 cm from the floor to the inferior part of Valiryo, to take advantage of the use of the lower diffusers to dry the feet.



Air Inlet

Make sure the air inlet areas (shown in the picture below) are free to avoid any clogged that will underutilize the flow rate of the

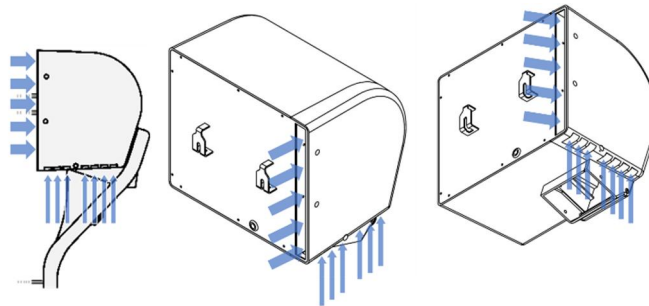


Figure 6: air inlet

Electrical installation



Valiryo body dryer power consumption is max 2800 W and must be connected to 220 – 240 V.

Electrical data

Voltage	220-240 V~; 50-60 Hz
Amperage	12A
Power	Max. 2800 W
Isulation class	class II



Table 2: Electrical data



Important disclaimer

The regulations and standards applicable in your country take precedence over any recommendation mentioned in this chapter. Please follow your local guidelines of electrical legislation such as VDE regulations. This chapter is intended to guide you to installation in accordance with the regulations, but does not replace any other possible electrical standard. (Example: "DIN VDE 0100"...). If you are not a trained electrician, please contact a specialist company to carry out the electrical installation. All electrical installations must be carried out in compliance with local standards and directives

Recommended installation

It is recommended to isolate Valiryo 's installation using a magneto thermic switch of 16 A. To additionally protect the installation, it is recommended to install a residual current disconnection device (RCD), not higher than 30 mA in the electrical circuit of the equipment according to IEC 60364-4-41:2005.

Electrical Connection:

Option 1: Permanent installation: Cut the power plug to access "L" and "N" wires on the appliance. Enter the power cable inside the false ceiling and make the electrical connection with the facility electrical network inside the false ceiling.

 *Option 1 is the recommended one by the Valiryo team. This permanent solution will enable the Valiryo to be placed inside the shower cabin.*

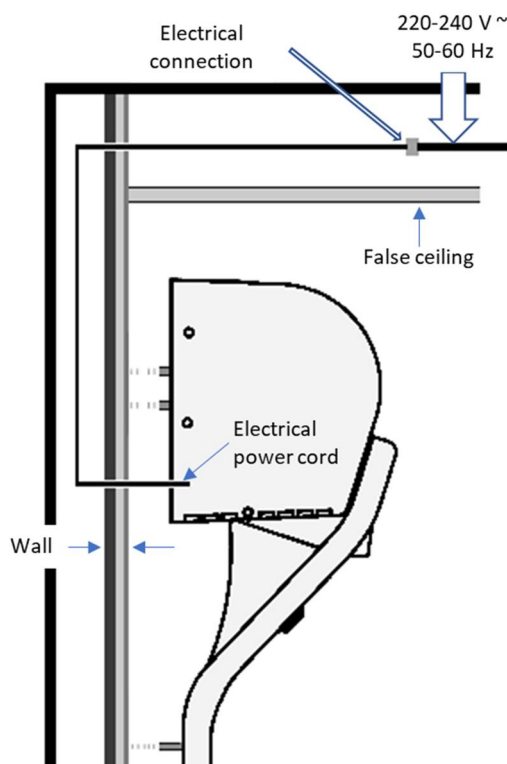


Figure 7: Permanent Installation (1A)

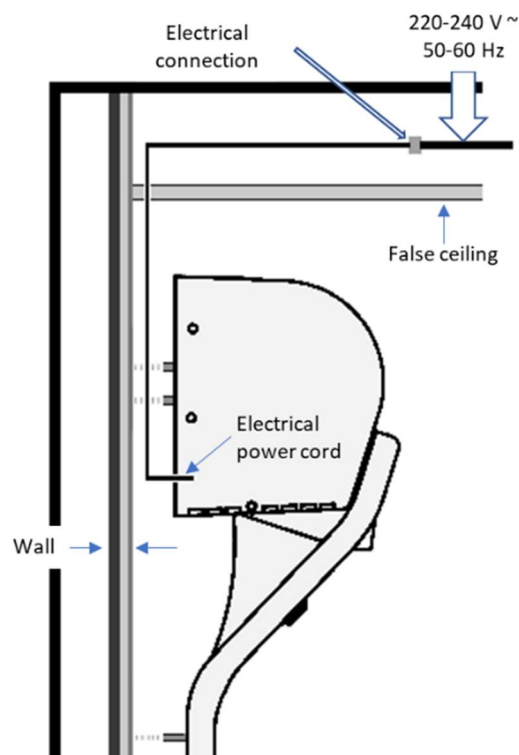


Figure 8: Permanent Installation (1B)

There are several options for installing the Valiryo body dryer inside the shower cubicle/wet room:

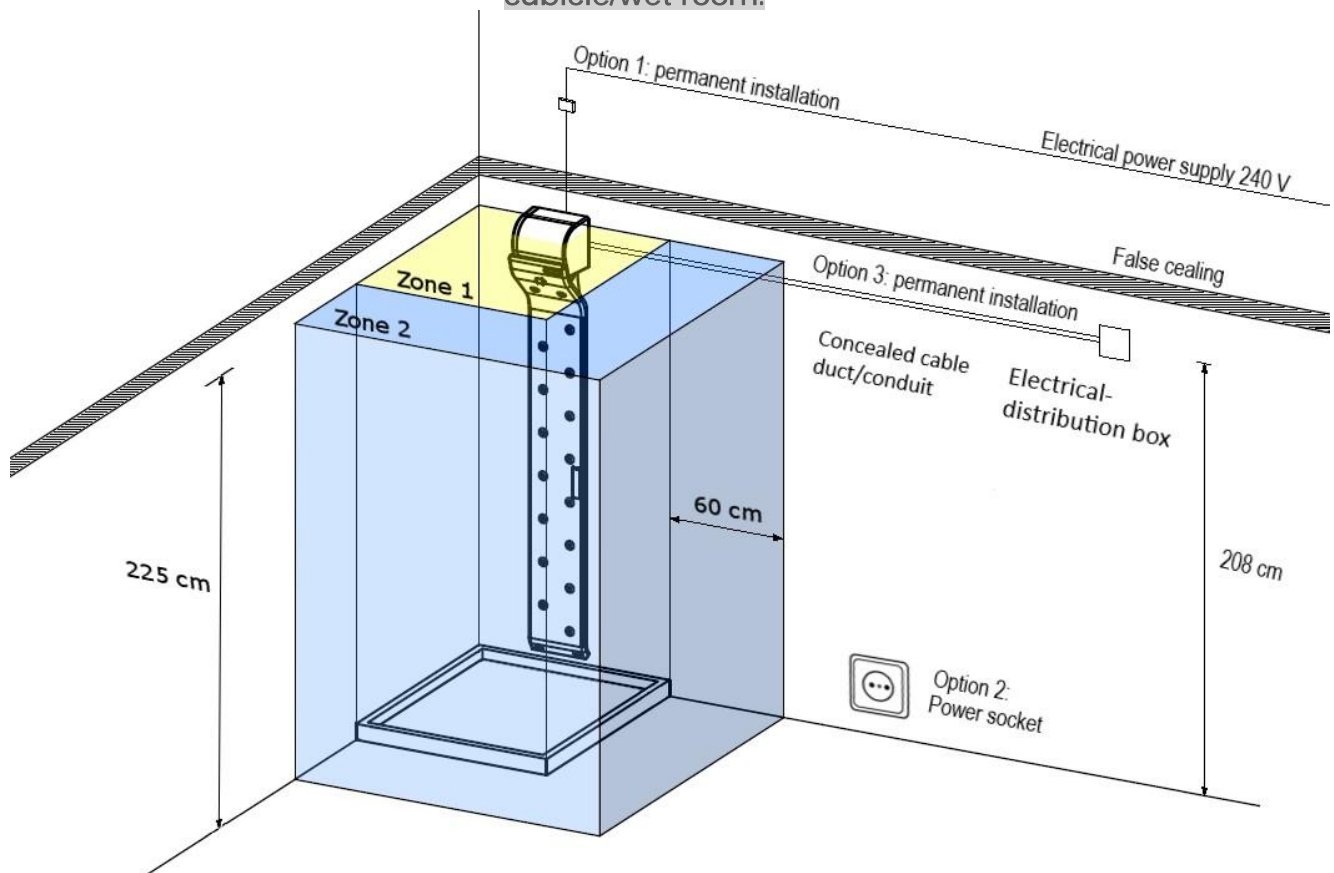


Figure 9: Electrical installation options (1A, 1B, 1C, 2)

Option 1A: Permanent installation through the other side of the wall. Perfect solution if you can arrange the position of the power cable during construction phase or on a deep bathroom renovation.

Option 1B: Permanent installation through the false ceiling. Perfect solution if you are installing Valiryo without any bathroom renovation.

Option 1C: Permanent installation by placing an concealed cable duct in new buildings or bathroom renovations. Perfect solution.

Place an concealed cable duct (horizontal) at a height of approx. 208cm. Let the cable duct end into a flush-mounted junction box. The subsequent power connection is then made in the flush-mounted junction box. Lead the Valiryo power cable (lengths of 3m) from one inlet of the cable duct to the junction box and connected to the power connection there. Before leading the Valiryo power cable through the cable duct, cut the power plug.

Option 2: Plug in directly to the Power socket. Be aware the power socket must be outside the zone 1 and zone 2 see **Fehler! Verweisquelle konnte nicht gefunden werden.** Placing Valiryo outside the shower cabin is not recommended, as you have to leave the warm shower area and the user experience will not be as pleasant as designed.

Remark:

For easier handling during assembly and possible disassembly of the blower unit, it is recommended to push approx. 10 cm of the connection cable into the blower housing.

Tips and hints for the best use



How to use Valiryo for your best possible body drying experience



— Step 1 —

Turn on Valiryo 20 seconds before you start using it.



— Step 2 —

Choose the configuration with lowest air speed and maximum temperature.



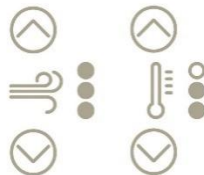
— Step 3 —

In the meantime, remove the largest water drops on your shoulders and chest with your bare hands before using Valiryo.



— Step 4 —

Position yourself in front of Valiryo and approach the nearest air diffuser with your mouth (maintain a distance of about 2cm). You will feel a source of heat is created that will soon spread out over your entire body.



— Step 5 —

Set the temperature and airspeed as you wish.



— Step 6 —

Relax and enjoy the moment.

After drying, you will not only feel deeply relaxed, but also notice a softer and more hydrated skin with each application. And what's more: With Valiryo, post-shower sweating will finally be a thing of the past.

Congratulations on a safer as well as more hygienic, efficient and sustainable way of body drying.